

Great Barrier Reef Fish

Here are reef species photographed at the Cairns Aquarium in Fall 2019 and 2022. (11/19 was in preparation for our Great Barrier Reef boat trip, many of which I also saw on the reef.) My tentative ID is based on Allen, Steene, Humann, and Deloach (2015), *Reef Fish Identification: Tropical Pacific*.

Butterflyfish & Angelfish



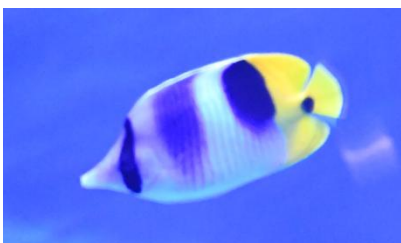
Threadfin Butterflyfish
(*Chaetodon auriga*)



Black-backed Butterflyfish
(*Chaetodon melannotus*)



Dot & Dash Butterflyfish
(*Chaetodon pelewensis*)



Pacific Double-saddle Butterflyfish
(*Chaetodon osycephalus*)



Blacklip Butterflyfish
(*Chaetodon kleinii*)



Teardrop Butterflyfish
(*Chaetodon unimaculatus*) [Wikipedia]



Pyramid Butterflyfish
(*Hemitaenichthys polylepis*)



Longfin Bannerfish
(*Heniochus acuminatus*)



Longnose Butterflyfish
(*Forcipiger flavissimus*)

Angelfish & Spadefish



Queensland Yellowtail Angelfish
(*Chaetodontoplus meredithi*)



Black-spot Angelfish
(*Genicanthus melanospilos*)



Three-spot Angelfish
(*Apolemichthys trimaculatus*)



Yellow Pygmy Angelfish
(*Centropyge heraldi*)



Longfin Spadefish (*Platax teira*)



Batvia Spadefish (*Platax batavianus*)



Orangespine Unicornfish
(*Naso lituratus*)



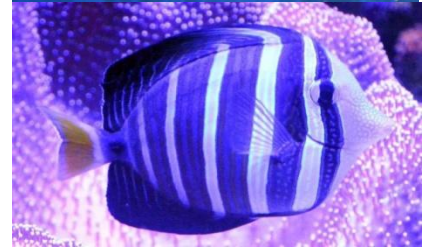
Pacific Sailfin Tang (*Xebrasoma vlifer*)



Pinnate Spadefish [Batfish]
(*Platax pinnatus*)



Brown Surgeonfish
(*Acanthurus nigrofuscus*)



Orangespine Unicornfish
(*Naso lituratus*)

Surgeonfish & Rabbitfish



Convict Surgeonfish
(*Acanthurus trisetigus*)



Paletail Unicornfish (*Naso brevirostris*)



Orange-band Surgeonfish
(*Acanthurus olivaceus*)



Palette Surgeonfish
(*Paracanthurus hepatus*)



Humpnosed Unicornfish
(*Naso hexacanthus*)



Whitecheek Surgeonfish
(*Acanthurus nigricans*)



Brushtail Tang (*Zebrasoma scopas*)



Bluespine Unicornfish
(*Naso unicornus*)





Humpback Unicornfish
(*Naso brachycentron*)



Coral Rabbitfish (*Siganus corallinus*)



Masked Rabbitfish (*Siganus puellus*)



Barred Rabbitfish (*Siganus doliatus*)



Foxfaced Rabbitfish (*Siganus vulpinus*)



Lined Rabbitfish (*Siganus lineatus*)



Coral Rabbitfish (*Siganus corallinus*)



Damselfish & Anemonefish



Sisortail Sergeant
(*Abudefduf sexfasciatus*)



Golden Damsel
(*Amblyglyphidodon aureus*)



Blue Damsel (*Pomacentrus epidogenys*) ?



Barrier Reef Anemonefish
(*Amphiprion akindynos*)



Clown Anemonefish
(*Amphiprion pterocula*)



Pink Anemonefish
(*Amphiprion perideraion*)



Spinecheek Anemonefish
(*Premas biaculeatus*)



Humbug Dascyllus (*Dascyllus aruanus*)



Blue-axil Chromis
(*Chromis atripectoralis*)

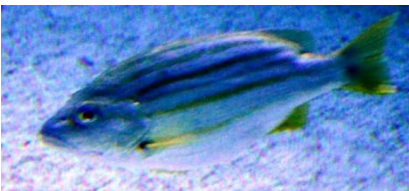


Blue-green Chromis (*Chromis viridis*)



Hawk Anthias (*Serranocirrhitus latus*) ?

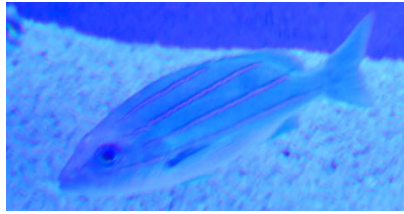
Snappers & Bream



Spanish Flag Snapper
(*Lutjanus carponotatus*)



Spanish Flag Snapper ?
(*Lutjanus caponotatus*)



Bluestripe Snapper (*Lutjanus kasmira*)



Red Snapper (*Lutjanus bohar*)



Sailfin Snapper (*Symphorichthys spilurus*)



Midnight Snapper juvenile
(*Macolor macularis*) (Reef App)



Bluebib Snapper (*Lutjanus rivulatus*)



Humpback Snapper (*Lutjanus gibbus*)



Striped Large-eyed Bream
(*Gnathodnetex aureolineatus*)



Bridled Monocle Bream
(*Scolopsis bilineata*)

Silvery



Giant Trevally (*Caranx ignobilis*)



Golden Trevally (*Gnathanodon speciosus*)



Bluefin Trevally (*Caranx melampygus*)



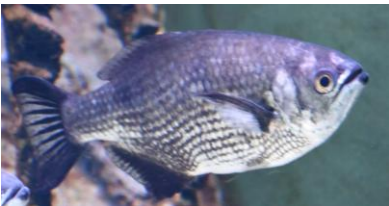
Silver Mono (*Monodactylus argenteus*)



Topsail Chub
(*Kyphosus cinerascens*) [Wikimedia]

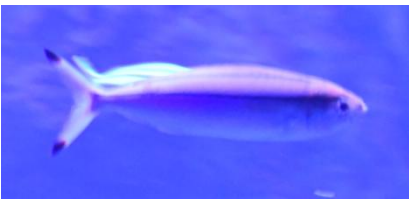


Banded Archer (*Toxotes jaculatrix*)



Spotted Scat (*Scatophagus argus*)

Slender Schoolers



Double-lined Fusilier
(*Pterocaesio diagramma*)

Groupers, Hawkfish, Sweetlips



Brown-marbled Grouper
(*Epinephelus fuscoguttatus*)



Orange-spotted Grouper
(*Epinephelus coioides*)



Camouflage Grouper
(*Epinephelus polyphkadion*)



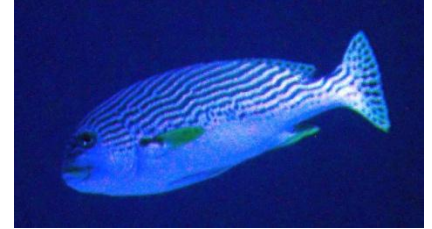
Blacksaddle Coral Grouper
(*Plectropomus laevis*)



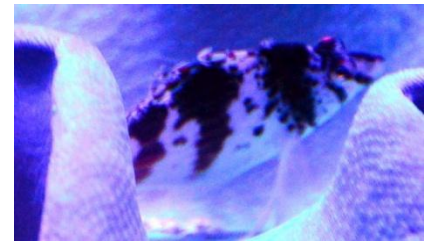
Giant Sweetlips
(*Plectorhinchus albivittatus*) ?



Many-spotted Sweetlips
(*Plectorhinchus chaetodonoides*)



Diagonal-banded Sweetlips
(*Plectorhinchus lineatus*)



Dwarf Hawkfish (*Cirrhhichthys falco*)

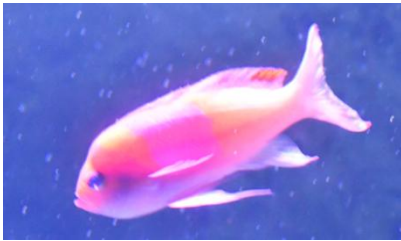
Fusilier & Anthias



Yellow-tail Fusilier (*Caesio cuning*)



Twospot Anthias
(*Psuedanthias bimacluatus*)



Squarespot Anthias
(*Pseudoanthias pluerotaenia*)



Purple Queen Anthias
(*Pseudoanthias pascalis*)

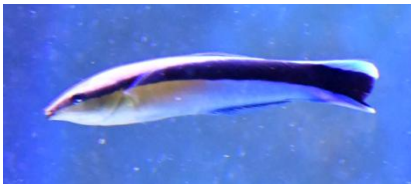


Long-fin Anthias (*Pseudoanthia ventralis*)

Wrasse



Yellowface Wrasse
(*Halichoeres solorensis*)



Bluestreak Cleaner Wrasse
(*Labroides dimidiatus*) [Wikipedia]



Sunset Wrasse (*Thalassoma lutescens*)



Pacific Bird Wrasse
(*Gomphosus varius*)



Yellowface Wrasse
(*Halichoeres solorensis*)



Humphead Wrasse
(*Chelinus undulatus*)



Harlequin Tuskfish
(*Choerodon fasciatus*)



Rockmover Wrasse
(*Novaculichthys taeniorus*)

Squirrelfish



Darkstriped Squirrelfish
(*Sargocentron praslin*)

Odd-shaped Swimmers



Clownfish Triggerfish
(*Balistoides conspicillum*)



Redtooth Triggerfish (*Odonus niger*)



Bumphead Parrotfish
(*Bolbometopon muricatum*) [GBR Library]



Black-spotted Puffer
(*Arothron nigropunctatus*)



Reticulated Puffer (*Arothron reticularis*)



White-spotted Puffer
(*Arothron hispidus*)



Black-blotched Porcupinefish
(*Arothron hispidus*)



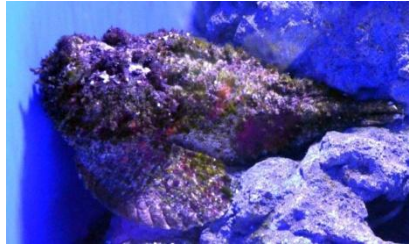
Blue-spotted Puffer
(*Arothron caeruleopunctatus*)



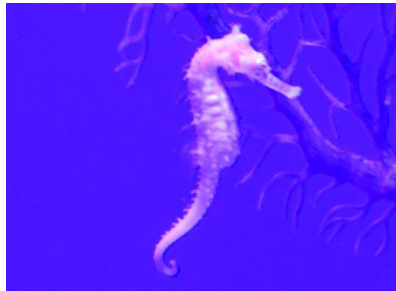
Grooved Razorfish (*Centriscus scutatus*)



Yellow-tail Flagblenny
(*Melacanthus atrodorsalis*)



Reef Stonefish (*Synanceia verrucosa*)



Barbur's Seahorse
(*Hippocampus barbouri*)



Spotted Seahorse (*Hippocampus kuda*)



Red Lionfish (*Pterois volitans*)



Coelacanth (*Latimeria chalumnae*)

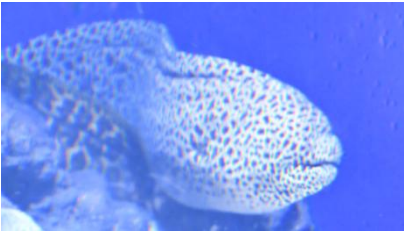


Barramundi (*Lates calcarifer*)

Moray



Yellowmargin Moray
(*Gymnothorax flavimarginatus*)



Peppered Moray (*Gymnothorax pictus*)



Yellowmargin Moray
(*Gymnothorax flavimarginatus*)



Olive Sea Snake (*Aipysurus laevis*)

Sharks & Rays



Gray Reef Shark
(*Carcharhinus amblyrhynchos*) ?



Black-tipped Shark
(*Carcharhinus melanopterus*)



Blacktip Shark (*Carcharhinus limbatus*)



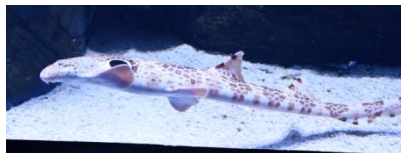
Whitetip Reef Shark (*Tiaenodon obesus*)



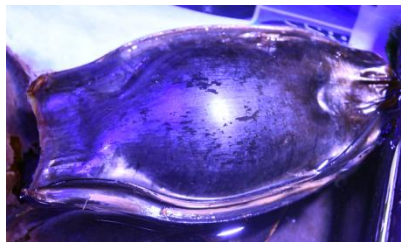
Leopard Shark
(*Stegosma fasciatum*)



Tawny Nurse Shark
(*Nebrius ferrugineus*)



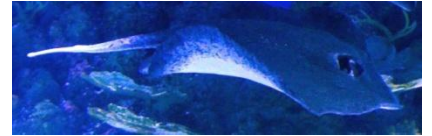
Epaulette Shark
(*Hemiscyllium ocellatum*)



Shark Egg



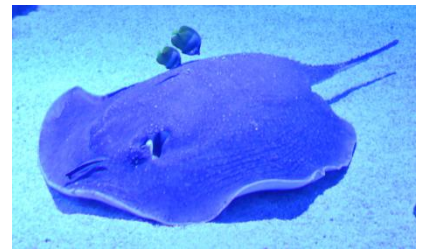
Giant Shovelnose Ray
(*Gloucestegus typus*) [8.75 ft long]



Whitetail Stingray
(*Himantura granulata*)



Blue-spotted Ribbontail Ray
(*Taeniura lymna*)



Thorny Stingray (*Urogymnus asperrimus*)
[Attended by Pacific Double-saddle Butterflyfish and a Cleaner Wrasse]

Sea Turtles



Olive Ridley Turtle
(*Lepidochelys olivacea*)



Green Sea Turtle (*Chelonia mydas*)



Leatherback Turtle
(*Dermochelys coriacea*)



Hawksbill Turtle
(*Eretmochelys imbricata*)



Loggerhead Turtle
(*Caretta caretta*)



Flatback Turtle
(*Natator depressus*)

Other Non-Fish



Crown of thorns (*Acanthaster planci*)



Blue Seastar (*Linkia laevigata*)



NEED ID

